

K-600

K-600 is designed with integrated joint profiles for rapid installation, leaving a flush surface with single seam joints. Available in standard or modular system.

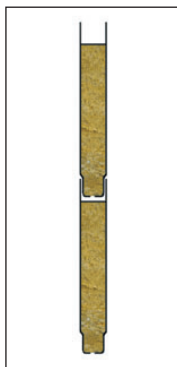
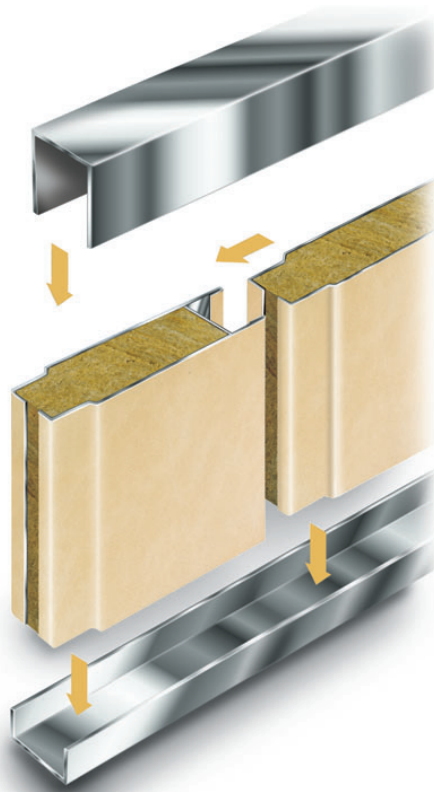
Approved B-15 with cable penetrations available for several wall types.

The system have been shock tested. More information available on request.

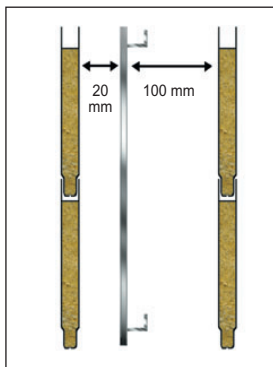
K-panels are also available in aluminium construction in B-15 with considerable weight savings. See technical description below.

WEIGHT:

All weights are based on system weight, including all profiles.



K-600/25mm/B-15
K-600/50mm/B-15
A-585/50mm/B-15
A-585/25mm/B-15



K-600/2x25mm/A-60

DESCRIPTION	K-600/50	K-600/100	K-600/25	A-585/50 **	A-585/25 *
Fire Class	B-15	B-30	B-15	B-15	B-15
Standard width	600 mm	600 mm	600 mm	585 mm	585 mm
Module length	up to 3000 mm	up to 3000 mm	up to 3000 mm	up to 3000 mm	up to 2500 mm
Module width	100–800 mm	100–800 mm	100–800 mm	100–800 mm	100-800 mm
Thickness	50 mm	100 mm	25 mm	50 mm	25 mm
Weight	19.2 kg/m ²	25.2 kg/m ²	13.8 kg/m ²	12.3 kg/m ²	12.7 kg/m ²
Sound reduction	R _W =32 dB	R _W =32 dB	R _W =26 dB	R _W =24 dB	–
Thermal Insulation	U=0.65 W/m ² K	U=0.34 W/m ² K	U=1.16 W/m ² K	U=0.65 W/m ² K	U=1.16 W/m ² K
Application	Partition and Lining	Partition	Partition and Lining	Partition and Lining	Lining

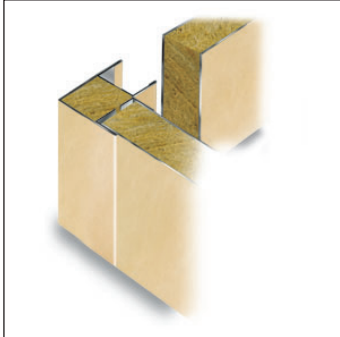
* Alu/Steel **Alu/Alu

WWW.NORAC.NO

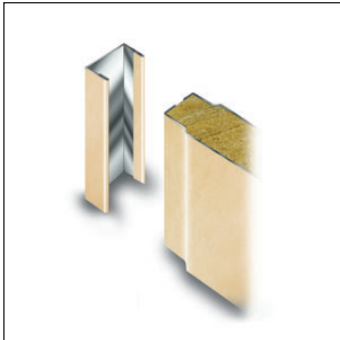


K-Wall CONNECTING DETAILS

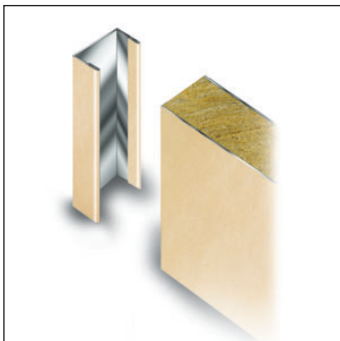
STANDARD



Complete corner element for cut finish or flush

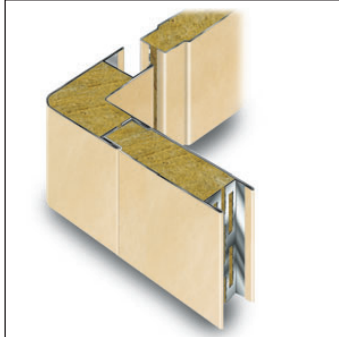


Standard U-profile for flush finish

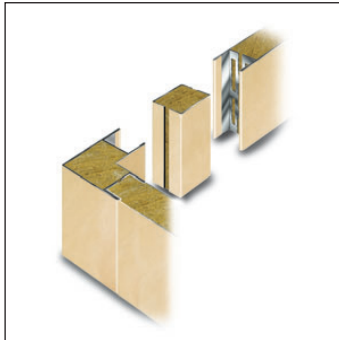


Standard U-profile for cut panel

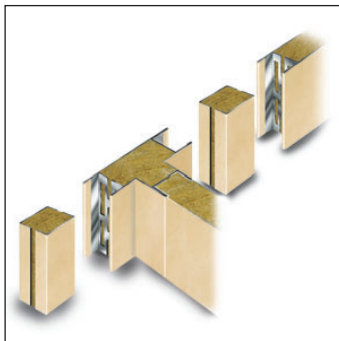
MODULAR



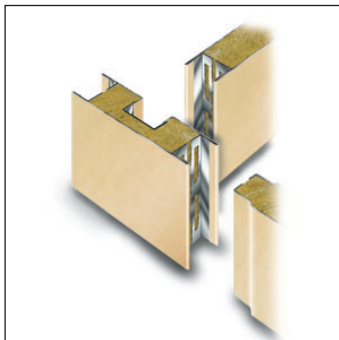
Rounded corners



Complete corner element for exposed corners only



T-connection



Recess connection for improved flexibility

NOTE:

Norac systems are delivered with a wide variety of connecting elements/profiles to obtain the best solutions.

Corners may also be delivered in stainless steel finish.

WWW.NORAC.NO

